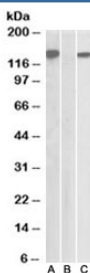


NBS1 Antibody [NLRP2] (R34550)

Catalog No.	Formulation	Size
R34550-100UG	0.5 mg/ml in 1X TBS, pH7.3, with 0.5% BSA (US sourced) and 0.02% sodium azide	100 ug

[Bulk quote request](#)

Availability	1-3 business days
Species Reactivity	Human
Format	Antigen affinity purified
Host	Goat
Clonality	Polyclonal (goat origin)
Isotype	Goat Ig
Purity	Antigen affinity
Gene ID	55655
Applications	Western Blot : 1-3ug/ml ELISA (peptide) LOD : 1:16000
Limitations	This NBS1 antibody is available for research use only.



Western blot testing of HEK293 lysate overexpressing human NLRP2/NBS1 with DYKDDDDK tag with NBS1 antibody [1ug/ml] in Lane A and probed with anti-DYKDDDDK tag (1/5000) in lane C. Mock-transfected HEK293 probed with NBS1 antibody [1ug/ml] in Lane B.

Description

Additional name(s) for this target protein: NLRP2; NALP2; NLR family, pyrin domain containing 2

Application Notes

Optimal dilution of the NBS1 antibody should be determined by the researcher.

Immunogen

Amino acids KNPQLIIDTEKHHP were used as the immunogen for this NBS1 antibody.

Storage

Aliquot and store the NBS1 antibody at -20oC.